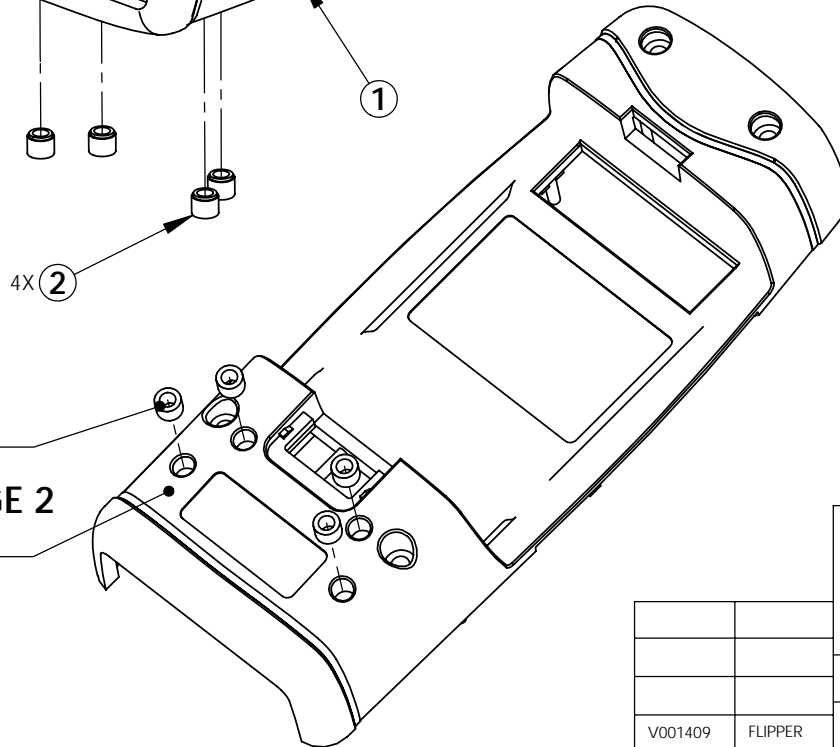
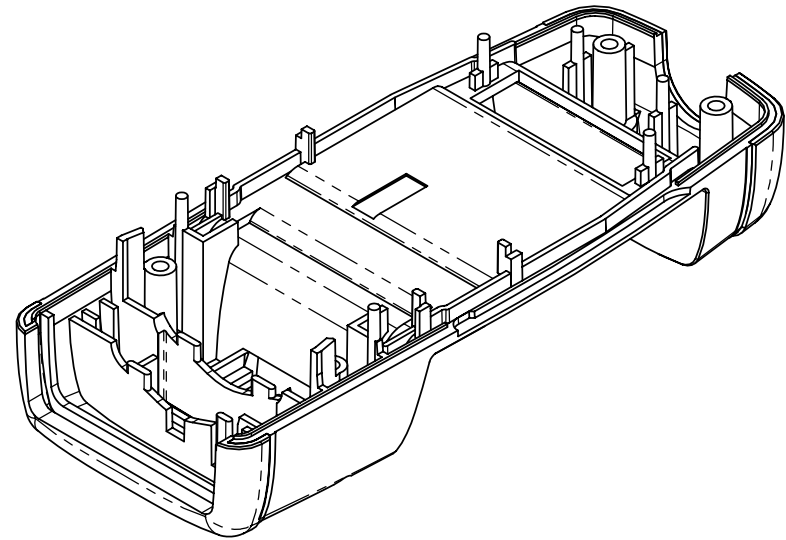
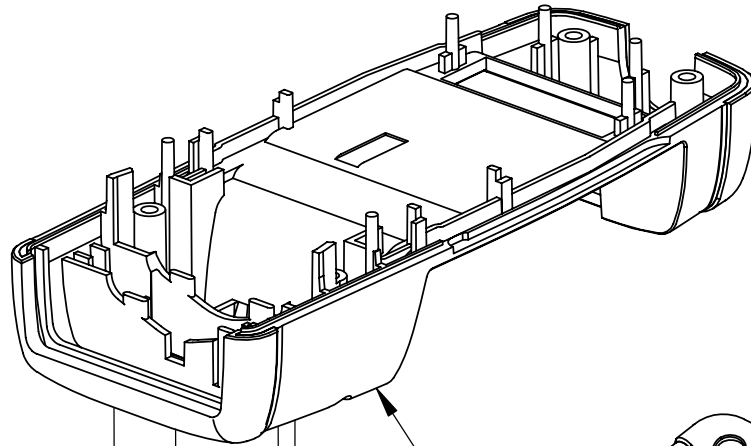


THE INFORMATION CONTAINED IN THIS DRAWING IS THE SOLE PROPERTY OF VISIONARY PRODUCTS, INC. ANY REPRODUCTION IN PART OR WHOLE WITHOUT THE WRITTEN PERMISSION OF VISIONARY PRODUCTS, INC. IS PROHIBITED. ALL RIGHTS RESERVED 1999, 2000, 2001, 2002

**NOTES**


1. INSTALL INSERTS (ITEM 2) INTO THE (4) RECESSED BOSSES OF ITEM 1 AS SHOWN.
2. PART TO BE ROHS COMPLIANT.
3. OUTER FACE OF ALL ITEM 2 INSERTS NOT TO PROTRUDE PAST OUTER FACE OF ITEM 1 CASE.
4. THREADED INSERT FITS A #2-56 SCREW WITH A MAXIMUM DEPTH OF .115".



SEE PAGE 2

ITEM NO.	QTY.	PART NO.	DESCRIPTION
2	4	C001877_01	INSERT, BRASS THREAD, #2-56 x .115" LONG
1	1	V001434_07	CASE LOWER OVERMOLDED

UNLESS OTHERWISE SPECIFIED DIMENSIONS ARE IN MILLIMETERS		APPROVALS	DATE
TOLERANCES ARE:		DRAWN	'05-8-16
FRACTIONS DECIMALS ANGLES		CHECKED	
.X ± 0.5 X ± 0.5		COG ENG	
.XX ± 0.10 X ± 0.5		PROJECT MNGR	
.XXX ± 0.050 X.X ± 0.1			
MATERIAL			
FINISH		OA	
V001409	FLIPPER	RELEASED	
APPLICATION			



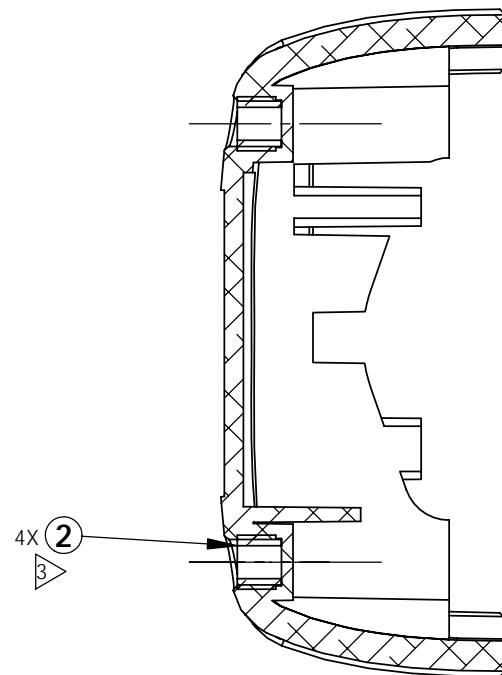
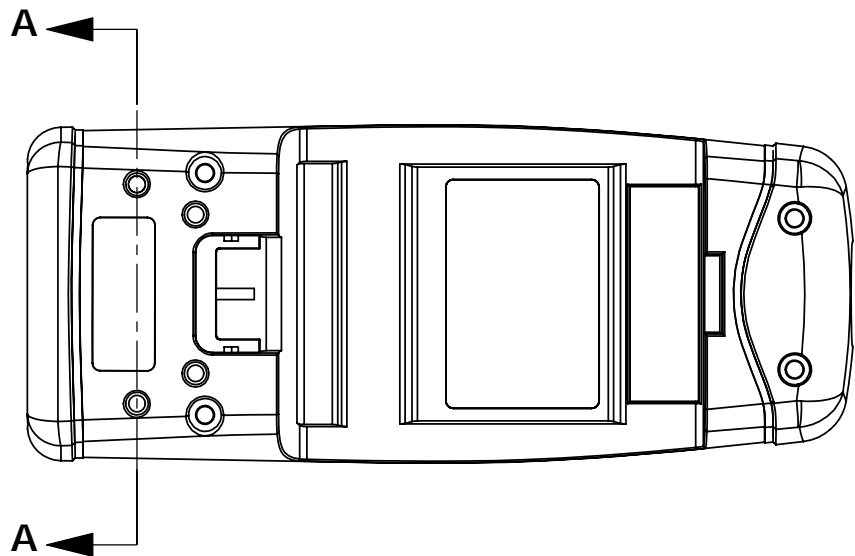
VISIONARY PRODUCTS INC.

## CASE LOWER w/ Inserts

SIZE A DWG. NO. **C002333** REV. 03

SCALE 1:1 SHEET 1 OF 2

THE INFORMATION CONTAINED IN THIS DRAWING IS THE SOLE PROPERTY OF Code Corporation. ANY REPRODUCTION IN PART OR WHOLE WITHOUT THE WRITTEN PERMISSION OF Code Corporation. IS PROHIBITED. ALL RIGHTS RESERVED 2006



**SECTION A-A**  
**SCALE 2 : 1**

		UNLESS OTHERWISE SPECIFIED: DIMENSIONS ARE IN MILLIMETERS TOLERANCES ARE: DECIMALS ANGLES .XX ± 0.25 X ± 1.0° .XXX ± 0.127 X.X ± 0.5°		REVIEWED BY: COG. ENG. S. SNYDER	DATE '05-8-16	<b>code</b>		
		MATERIAL		PEER				
		FINISH		ELEC. ENG.		<b>CASE LOWER</b>		
		APPLICATION		PROJECT MNGR.				
V001409	FLIPPER			Q.A.		SIZE A	DWG. NO. <b>C002333</b>	VERSION: 03
NEXT ASSY	PROJECT	DO NOT SCALE DRAWING				SCALE 1:1	SHEET 2 OF 2	