

Software Installation

- 1 After downloading the software, double click on the downloaded file. The file is a self-extracting .zip and will automatically begin the installation process. When you get to the screen shown below (figure 1), click Next to begin the installation.

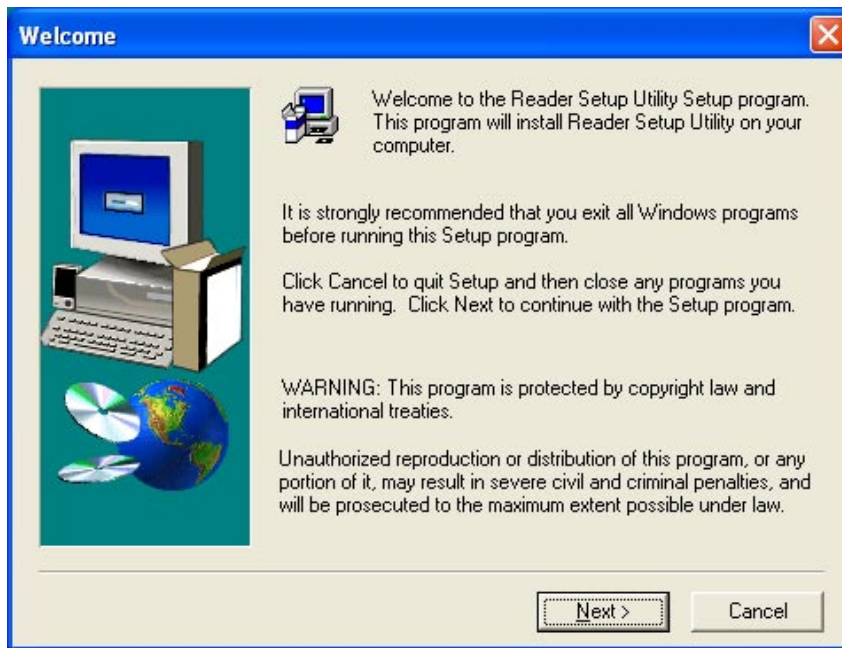


figure 1

- 2 Next, click "Yes" to accept the terms of the License Agreement (figure 2).

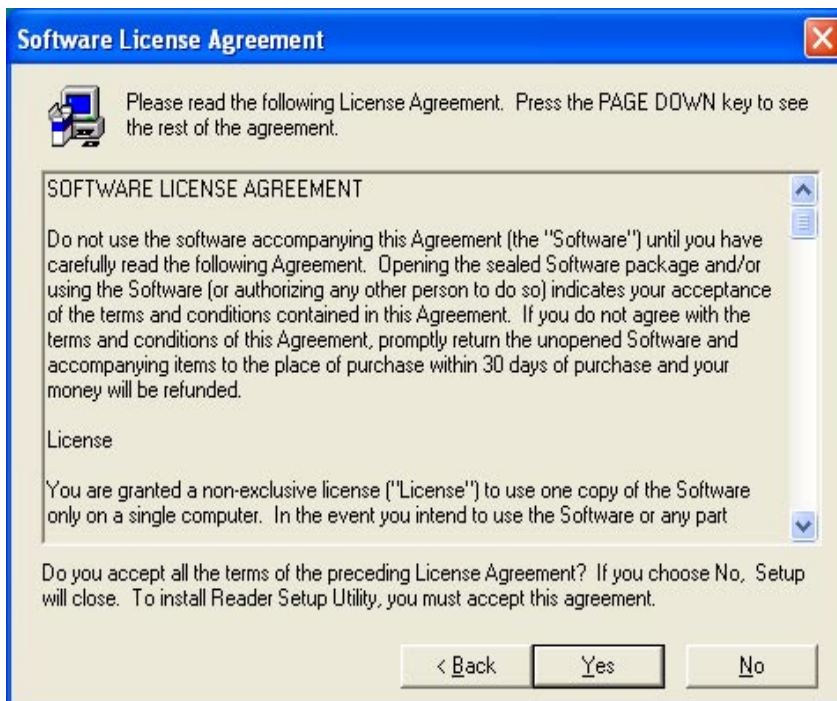


figure 2

Installation Guide (con't)

- 3 Click "Next" to accept the default installation folder (figure 3).

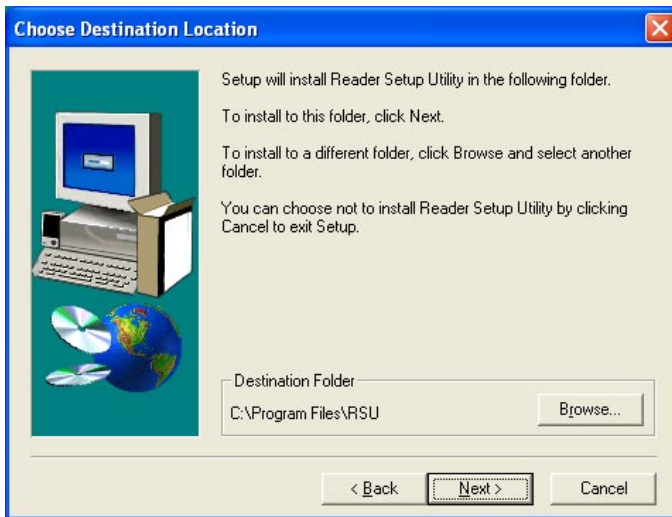


figure 3

- 4 Click "Next" to add the program icon to the folder listed (figure 4).



figure 4

- 5 Click "Finish" to complete the installation (figure 5).

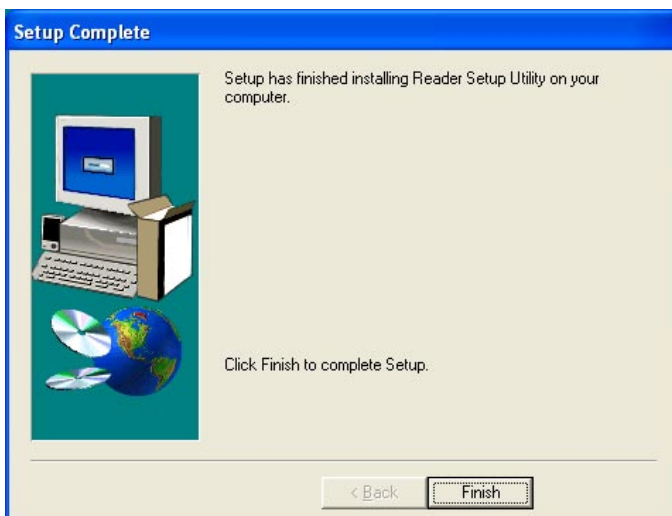


figure 5

Connecting a Reader

- 1 Connect your reader to the computer via the RS232 cable. Your reader must be set to the RS232 factory default settings. Scan the code below:

Reset to RS232 Factory Defaults



M418_02

Baud Rate: 57600
Data Bits: 8
Stop Bits: 1
Parity: None

- 2 Open the Reader Setup Utility software to the screen pictured below (figure 6).

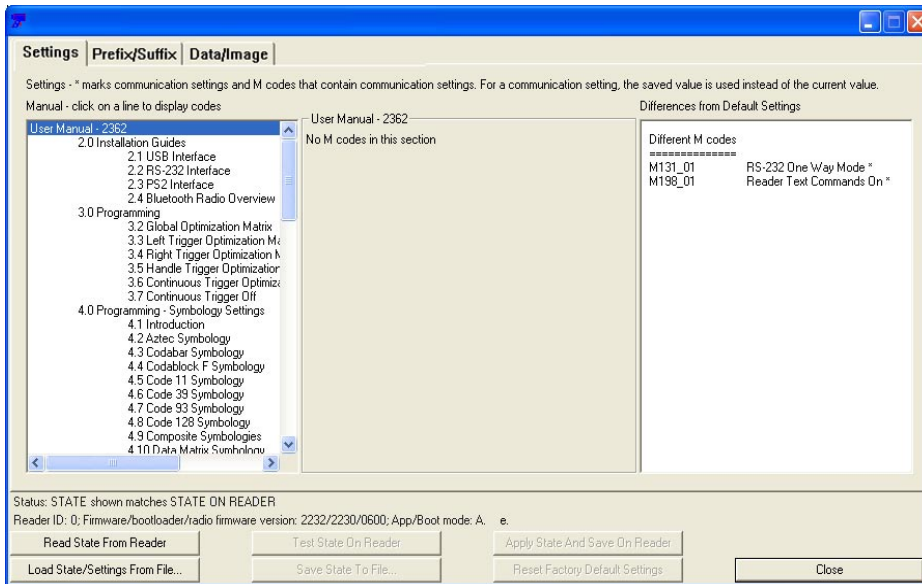


figure 6

- 3 Click on the button “Read State From Reader” to show the reader’s settings. After the “State” is loaded you will notice the right window populate with the current reader settings. For more information on utilizing the Reader Setup Utility software, please download the Reader Setup Utility User Manual at: www.codecorp.com.

Note: The Reader must have Firmware version 2232 or greater.